

AgieCharmilles

# CUT C 350

# CUT C 600



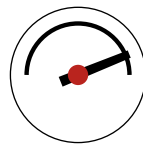
CUT C 350/600

# The solution for standard parts

The CUT C series are designed to guarantee the best performance maintaining low running costs. The high cutting speed allows adapting to the biggest production volumes, while the AC CUT HMI 2 system ensures a perfect understanding and use of the expert modules.



**CUT C series are easy:**  
save time and improve your operator's efficiency.



**CUT C series are fast:**  
increase your productivity and reduce your cost per part.



Accelerate your return of investment by benefiting of low running costs.

## AC CUT HMI 2

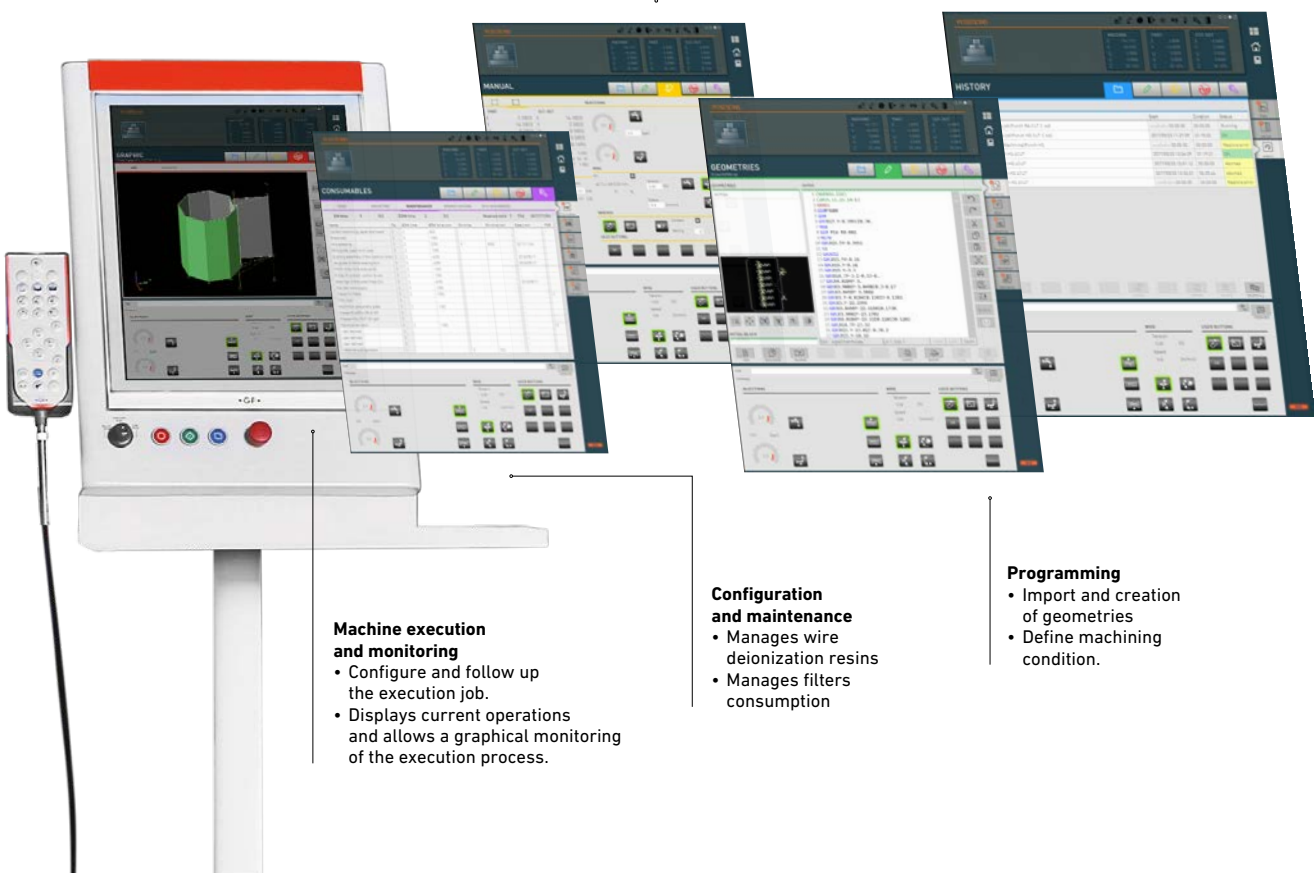
AC CUT Human Machine Interface enables increasing the productivity by providing efficient tools to assist the operator in the workshop.

### Manual mode set up

- Access to main machine functions
- Perform manual measurements, and manual machining.

### Files Management

- Organize the execution of a succession of jobs.
- Manage files and folders.
- Interact with preparation and execution modes.
- Get autonomy by access to AC CAM EASY programming system



### Machine execution and monitoring

- Configure and follow up the execution job.
- Displays current operations and allows a graphical monitoring of the execution process.

### Configuration and maintenance

- Manages wire deionization resins
- Manages filters consumption

### Programming

- Import and creation of geometries
- Define machining condition.



## Wire circuit

The wire spool storage has been designed to be easily accessible so that the operator can carry out a rapid change of spools.

**The simplest, the best**  
Minimum components and consumable parts means low maintenance, reducing running costs.

**Automatic threading and rethreading**  
For unattended running hours, the equipment includes automatic wire threading system (as standard).

**Thermocut for all types of wire**  
Whether it's a hard or soft brass, coated or not, automatic threading is fast and reliable.

## Digital Intelligent Power Generator (IPG)

This fully programmable power supply is equipped with a dedicated electronic circuit that includes the EDM know-how. Our Intelligent range of expert technologies help you to achieve the surface quality and precision the industry demands.

**POWER-EXPERT**  
Wire breakage prevention on parts with variable heights. POWER-EXPERT select the optimal power to be used in the wire.

**Corner strategy**  
Ensures accuracy of sharp angles and small radii. Adjust of machining parameters during changes of direction.

**High cutting speed**  
Thanks to the cheap brass wires, extremely high removal rates are possible.



### Technical data

		CUT C 350	CUT C 600
Axis travel (X, Y, Z)	mm	350 x 250 x 250	600 x 400 x 350
Axis travel (U, V)	mm	± 45	± 50
Speed of axis movement	mm/min	0-3000	0-3000
Max. workpiece dimensions *	mm	820 x 680 x 250	1030 x 800 x 350
Max. workpiece weight	kg	400	1000
Max. taper angle / part thickness	° / mm	± 30°/50	± 30°/50
Wire diameters available	mm	0.15, 0.20, 0.25, 0.30	0.15, 0.20, 0.25, 0.30
Max. weight of wire spool	kg	8 (standard)	8 (standard)
Best surface finish Ra (carbide/steel)	µm	0.25/0.30	0.25/0.30
Anti-collision protection		Integrated in X, Y and Z axes	Integrated in X, Y and Z axes
Measuring system		Linear glass scales (XY) and encoder (UVZ)	Linear glass scales (XY) and encoder (UVZ)
CE kit		Standard	Standard

\* Width x depth x height

## At a glance

We enable our customers to run their businesses efficiently and effectively by offering innovative Milling, EDM, Laser, Additive Manufacturing, Spindle, Tooling and Automation solutions. A comprehensive package of Customer Services completes our proposition.

[www.gfms.com](http://www.gfms.com)

**Contact: High Performance Machinery Ken Otzel**  
**(508)958-5565 / [otz1@aol.com](mailto:otz1@aol.com)**  
**Chris Sequeira (508)954-3706 / [chris@hpm-ne.com](mailto:chris@hpm-ne.com)**



© GF Machining Solutions Management SA, 2019  
The technical data and illustrations are not binding.  
They are not warranted characteristics and are  
subject to change.